



MEMBER CONNECTION

May
2008

P.O. Box 371
Wabash, Indiana 46992
Voice: 260-563-1168
Fax: 260-563-6920

Kimberly Pinkerton, Editor
Beth Miller, Layout & Design
Email: info@wabashchamber.org
URL: www.wabashchamber.org

TWELFTH ANNUAL WACCY GOLF

June 4
Honeywell Public Golf Course

**HOLE IN ONE
CONTEST**

Lots of Prizes
Lots of Fun

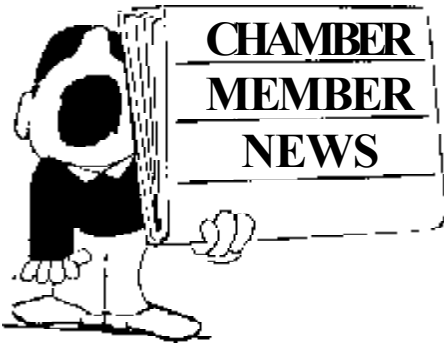
Dual Flights — 8:00 a.m. & 1:00 p.m. Sponsorships Available — see attached Flyer

The Wabash County Chamber of Commerce WACCY Golf Chair, Brian Campbell, announces that the Twelfth Annual WACC-Y (Wabash County Chamber Yearly) Golf Outing will be held Wednesday, June 4, (rain date June 18) at the Honeywell Golf Course. This year's Best Ball Scramble will feature two flights with registration beginning at 7 a.m. for the morning flight (tee-off 8 a.m.), and a noon registration for the 1 p.m. tee-off. Lunch will be available for all players between rounds. Hole-in-One contests, Single-Hole Putting Challenge, and many other fun challenges with lots of prizes will be included in the day's fun. Door prizes will be available throughout the day as well, with awards to the top teams, and a traveling trophy for the overall winning team. In addition, special prizes will be awarded for Longest Drive, Longest Putt, Closest to the Pin, Closest 2nd Shot, and Closest to the Line challenges on special holes. The cost for individual golfers is \$80 or \$320 for a team of four. A skins game will be played and special features such as mulligans and scratch-off golf will also be available.

Businesses wishing to take advantage of some additional marketing may wish to checkout the www.wabashchamber.org website for sponsorship opportunities. Driving Range, Drink Station, Lunch, Scoreboard and Hole Sponsorships are available. Midwest Eye will be this year's exclusive Golf Cart Sponsor. Door prize donations are also welcome.

To secure a sponsorship or register for this event visit www.wabashchamber.org, email info@wabashchamber.org, or mail forms to Wabash County Chamber of Commerce, 210 S. Wabash St., Wabash, IN 46992. WACCY Golf Committee members include Mr. Campbell, Teresa Galley (Wells Fargo Bank), Skip Daughtry (Beauchamp & McSpadden), Eric Cass (Honeywell Golf Course), Mark Carroll (Wabash Plain Dealer), Kyle Dubois (Honeywell Center), Robert Pearson (Wabash County REMC) and Lynn Yohe (Yohe Realty, Inc.)

**OVERALL WINNING TEAM WILL RECEIVE FREE REGISTRATION FOR THE
LOGANSPORT CHAMBER OF COMMERCE GOLF OUTING**



Please route this newsletter to the other staff in your business to keep them up-to-date on services, functions and programs available to all employees of our member companies!

HAVE YOU HAD CHANGES OR IMPROVEMENTS IN YOUR BUSINESS? HAVE YOU RECEIVED AN AWARD, REACHED A MILESTONE, OR COMPLETED ADDITIONAL TRAINING? WE WANT TO KNOW. SHARE THESE THINGS WITH YOUR CHAMBER PARTNERS. THEY TOO ENJOY HEARING. CALL, FAX, E-MAIL, OR MAIL NOTES TO THE CHAMBER OFFICE.

Larry D. McSpadden, Senior Vice President of Beauchamp & McSpadden, was elected President and Chairman of the Board of Associated Risk Managers Inc. (ARM) at their April 8 Shareholders Meeting in Las Vegas. ARM was founded in Indiana in 1970 by ten insurance agencies from around the state, including Beauchamp & McSpadden. The organization is now made up of over 230 agency locations in 24 states handling more than \$4 billion in annual insurance premiums.

The **Dr. James Ford Historic Home** will begin the "Concert in the Garden" Series on Sunday, May 25, at 2 p.m., featuring the Cathy Morris Duo. This brother and sister team, playing the electric violin and keyboards, will highlight familiar classic standards and some original compositions. Summer hours are now in effect: Wednesdays and Thursdays 10:00 a.m. to 3:00 p.m., Fridays and Saturdays 10:00 a.m. to 5:00 p.m., and Sundays noon to 5:00 p.m. Other hours are available by appointment. For more information please call Tyler Handwork, Director, 260.563.8686 or visit www.jamesfordmuseum.org.

The **Wabash County Historical Museum** will present Dick Kimler at the May 22 History Hunter's Event. Mr. Kumler spent two weeks with his nephew on a Navy Destroyer. He will share his experience beginning at noon in the Museum's multi-purpose room. Bring your lunch and enjoy the presentation. Seating is limited for the event, so please call 260.563.9070 to reserve your spot. Participation is free for Museum members or with a paid daily admission.

Harish and Pravina Patel, owners of the **Wabash Inn**, 1950 South Wabash Street, have announced they are now officially a **Knights Inn**. We applaud their efforts of continually upgrading their facility and bringing this national chain to Wabash. To reserve a room for your out-of-town visitors, call 260.563.7451.

Pathfinder Services Inc. recently presented service awards to Wabash employees. Kristy Vodde, QMRP/Case Coordinator received her 15 year award and Regina Somerlot, Substitute, and Beth Stodgell, Weekend Assistant, received 5 year awards. CONGRATULATIONS!

Wabash Electric announces the consolidation of its Information Technology Services Division and Intrasect Solutions Division into **Intrasect Technologies**. This brings together Microsoft certified technicians providing network support and service with Microsoft SQL programmers and Microsoft .NET software specialists providing integration of data into customer's ERP business systems. Intrasect Technologies consists of Networking Solutions managed by Tom Polk and Manufacturing Solutions managed by Steve Forrester. Intrasect Technologies can still be reached at 800.850.3084, 260.563.2240 in Wabash, 574.267.1619 in Warsaw, and at their new location in Fort Wayne at 260.471.9761.

Honeywell Center offerings:

New Clark Gallery Exhibit features two North Manchester artists, Susan Ring and Penny French-Deal. Both are longtime artists who offer watercolor and oil paintings in the impressionist style. The exhibit, "Strokes of a Brush: Take Two" will be on display April 23 - May 11. Corporate sponsors are The Francis Shoppe and Industrial Automated Machines, Inc.

The 2008 Sizzlin' Summer Plaza Series will begin in June. These free concerts will be held on the Honeywell Center Plaza each Thursday through July. The series includes **Daddy-o's** - June 5, **Crossover** - June 12, **Renegade** - June 19, **The Time Travelers** - June 26, **Harness Family Band** - July 3, **EMS** - July 10, **The Posse** - July 17, **Swampwater Stompers** - July 24, and **Tuxedo Junction** - July 31.

Tickets for four great shows go on sale May 6. **The United State Army Field Band Jazz Ambassadors** will perform a FREE concert on Tuesday, July1, 7:30 p.m. **Spike and the Bulldogs** will be performing on Friday, August 1, 8:30 p.m. Rock n' Roll icon, **Chubby Checker** will be at the Center on Saturday, August 16, 7:30 p.m. And, country music legend, **Vince Gill** will perform on Thursday, September 25, 7:30 p.m.

Upcoming Concerts

Bobby Vinton	May 9	7:30 p.m.
Styx	May 27	7:30 p.m.

Tickets for these concerts can be purchased by calling the Box Office at 260.563.1102 or by visiting www.honeywellcenter.org

WELCOME NEW MEMBERS

The Honeywell Studio, 378 N. St. Rd 15, Wabash, IN 46992 Phone: (260)563-4151 Fax: (260)569-1124 Email: byaggi@wabashcc.com URL: www.wabashcc.com Contact: Bob Yaggi. Foundation formed to preserve Honeywell Studio building. The goal is to make the building and grounds more accessible to the general public.

Roofs Unlimited, 5958 E 500 S, Wabash, IN 46992 Phone: (765)981-4812 Fax: (765)981-4801 Contact: Paul Little.

Treasure Depot, 261 S Wabash St, Wabash, IN 46992 Phone: (260)225-0752 Contact: Ryan Daily. They Buy-Sell-Trade with new & used merchandise.

Randy Head, 5003 Waterbury Court, Logansport, IN 46947 Phone:(574)601-7494 Email: rhead10@hotmail.com URL: www.electrandyhead.org. Candidate for State Senate.

State Farm Insurance, 2602 Chicago St, Valparaiso, IN 46383 Phone: (219)263-8628 Email: maria.herrera.lu4@statefarm.com URL: statefarm.com Contact: Maria Herrera.

Heaven on Earth, 4767 North State Road 15, Wabash, IN 46992 Phone: (765)833-5461 Email: aandchoe@dishmail.net Contact: Cheryl Ross. They are a full service greenhouse, floral, gift shop. They also cater to ladies with their new quilt area where they offer many fabrics, patterns, classes and service.

LABOR FORCE ESTIMATES FROM THE INDIANA DEPT. OF WORKFORCE DEVELOPMENT

AREA	LABOR FORCE	EMPLOYED	UNEMPLOYED	RATE	Seasonally Adjusted RATE
U.S.					
January 2008	152,828,000	144,607,000	8,221,000	5.4	4.9
December 2007	153,705,000	146,334,000	7,371,000	4.8	5.0
January 2007 (Benchmark)	151,924,000	144,275,000	7,649,000	5.0	4.6
INDIANA					
January 2008	3,191,164	3,029,437	161,727	5.1	4.5
December 2007	3,212,529	3,069,699	142,830	4.4	4.6
January 2007 (Benchmark)	3,207,814	3,034,471	173,343	5.4	4.8
WABASH					
January 2008	17,382	16,295	1,087	6.3	
December 2007	17,707	16,719	988	5.6	
January 2007 (Benchmark)	17,462	16,445	1,017	5.8	

FROM THE LIBRARY

by Ware W. Wimberly, Director

With the rising energy costs whether fuel, electric, etc., there is a lot of focus on clean or sustainable energy. Along with the attention to alternative energy, the concept of going green or reducing environmental impact is receiving a lot more attention today, too. Is your business or company looking to use alternative, clean, and/or sustainable energy resources? Perhaps, one is looking for basic or small ways for the workplace or home to be more energy efficient. If you are looking for information on such issues, the Wabash Carnegie Public Library might have some resources for you. Here are just a few print resources:

Evans, Robert L. Fueling Our Future: An Introduction to Sustainable Energy. New York: Cambridge University Press, 2007.

This book provides a very good overview of the current world wide energy demand and supply patterns. It also examines new and sustainable energy sources.

Pahl, Greg. The Citizen-Powered Energy Handbook: Community solutions to a Global Crisis. White River Junction, VT: Chelsea Green Publishing Company, 2007.

This resource explains strategies using available renewable energy techniques that can be utilized by individuals or communities to address energy needs.

Cuthbert, Amanda and Jon Clift. Greening Your Office: From Cupboard to Corporation, an A-Z Guide. White River Junction, VT: Chelsea Green Publishing Company, 2007.

This almost pocket sized book provides practical tips and changes to the workplace that save money and reduce environmental impact.

If the Library does not own a particular resource (book, article, etc), inquire about the Interlibrary Loan option. With Interlibrary Loan, Wabash Carnegie Public Library may obtain resources from other libraries and institutions for a patron to borrow for a certain amount of time. Interlibrary Loan is a great asset we provide, and I encourage you to utilize it.

If I, or the Wabash Carnegie Public Library, may be of assistance to you, please let me know. I may be reached at (260) 563-2972 or e-mailed at warew@wabash.lib.in.us.

HHIC UPDATE

April 30, 2008- Governor Mitch Daniels, together with local and state officials, broke ground on the first of four phases to build the Fort to Port US 24 project. The \$170 million Major Moves construction project will improve access between Fort Wayne to the Port of Toledo, and, with the Hoosier Heartland Corridor, complete the long-awaited stretch from Lafayette to Ohio.



Photo by Stacie McCormick.

The Fort to Port Corridor is a Major Moves construction project that includes a new alignment for US 24 from Fort Wayne to the Ohio state line. The new alignment will run south of old US 24.

Indiana will increase its position in the global economy with quicker and more efficient access to international ports. An improved US 24 will allow easier and quicker access to the Port of Toledo and international markets. When combined with the Hoosier Heartland Corridor, there will be a new, limited access travel corridor from Lafayette, Indiana, to Toledo, Ohio, allowing for the easy movement of products from Indiana's Agricultural Center to the Great Lakes Ports.



MATURE WORKER ANALYSIS

Tecumseh Area Partnership, Inc. (TAP) has recently developed the [Mature Worker Impact Analysis](#) to help employers determine how anticipated retirement of baby boomers will affect their business over the next five to ten years. According to the U.S. Bureau of Labor Statistics, the number of workers aged 50 and over will increase by 34 percent from 2003 to 2012 while the number of workers ages 16-49 will increase by just 3 percent. A regional survey of employers in Benton, Carroll, Cass, Clinton, Fountain, Fulton, Howard, Miami, Montgomery, Tippecanoe, Tipton, Wabash, Warren, and White counties, completed by TAP, found that 72 percent of the employers were not worried about the impact of the aging workforce on their business. [The Mature Worker Impact Analysis](#) helps an employer determine the overall demographic landscape of their organization. It also examines the areas of the company which are vulnerable to skills and talent drain. This analysis tool has been made possible through WIRED, a federal development initiative designed to help state and local communities compete in the global economy. For more information about the Mature Worker Impact Analysis, contact Tecumseh Area Partnership, Inc. at 866.510.7732 ext. 311 or ext. 312.

UPCOMING EVENTS

TAKE ADVANTAGE OF YOUR MEMBERSHIP INVESTMENT BY
PARTICIPATING IN THESE GREAT NETWORKING OPPORTUNITIES

MAY LUNCH & LEARN

May 8, 2008, from Noon to 1 p.m., in the Chamber Meeting Room. Topic "Advanced Excel Spreadsheet Tools" presented by Anita Wildman, Quality and Training Officer, Beacon Credit Union. Sponsored by Beacon Credit Union. Cost is \$12/members — \$24/non-members. Register by May 6 by calling the Chamber or online at www.wabashchamber.org.

BUSINESS BEFORE HOURS

The next Business Before Hours will be June 11, 7:00 a.m., at the Honeywell Center, 275 W. Market St., Wabash.



Business Sponsors are **Ivy Tech Community College, Midwest Eye Consultants, PC, First Merchants Bank, Star Excavating, Charley Creek Gardens.** The emcee will be **Christina Sapusek, Visionary Computers/Visionary Web.** To make reservations call the Chamber at 260.563.1168, email beth@wabashchamber.org or visit our web site at www.wabashchamber.org.

DAVE WEBER SEMINAR

The Wabash County Chamber of Commerce, Manchester Community Schools, Metropolitan School District of Wabash County and Wabash City Schools are working cooperatively to sponsor a presentation by Dave Weber. The seminar entitled "I'm Spread So Thin You Can See Through Me!" will be presented Tuesday, October, 14, 2008, 8:00 a.m. - 12:00 p.m. at the Honeywell Center. All leaders in education, business and industry, or the community should make plans to attend this seminar. The cost is \$160 per person, with each attendee receiving approximately \$120 worth of materials.

To register for this event please call the Chamber at 260.563.1168, email info@wabashchamber.org, register online at www.wabashchamber.org, or mail the form on the attached flyer to the Chamber.

BUSINESS AFTER HOURS

The next Business After Hours is scheduled for May 20. The sponsor will be **Bickford Cottage.** Please plan to visit their 3037 West Division Road location (across from the Honeywell Golf Course) between 4:00 and 7:00 p.m. Don't miss this opportunity to tour a unique facility and network with their staff and other business people.



Business After Hours has been a very popular event. Those businesses who have sponsored a BAH have been very pleased with the number of visitors to their facilities. If you would like to sponsor a BAH, please call the Chamber office, 260.563.1168. We are now booking for 2009.

FREE WORKSHOP

"HOME OWNERSHIP IS POSSIBLE"

Community Connections, the Housing Division of Pathfinder Services, Inc., will offer a FREE Homebuyer Workshop in Wabash on Tuesday, May 13 in the Honeywell Center Crystal Room at 6:30 p.m. Attendees will find out if they qualify for up to \$25,000 in Down Payment Assistance for a new home. To register for the workshop or for more information, contact Jeff Teusch at 260.356.0521, 800.310.9510 or email jteusch@pathfinderservices.org.

NEW RECYCLING CONTAINERS

The Wabash County Solid Waste Management District announces the addition of four 8-cubic yard recycling containers for corrugated cardboard at their 814 Manchester Avenue recycling drop-off site. This addition provides a total of six containers for corrugated cardboard at this location. The new containers will help satisfy the increased demand for recycling capacity in the City of Wabash.

Residents and small businesses using the recycling program are asked to be respectful of others wanting to use the recycling system and please flatten your boxes before placing them in the containers. Breaking down the boxes allows a larger amount of material to be placed in each container.

BOARD MEMBERS

2007-2008

Andy Eads, Chair
Wabash Plain Dealer
Trisha Metzger, Chair Elect
First Federal Savings Bank
Kathy Jones, Vice Chair
First Farmers Bank & Trust
Doug Mays, Treasurer
Thermafiber
Brian Campbell
Randall Miller & Associates
Ron Kerby, Past Chair
First Merchants Bank
Kimberly Pinkerton, President
Chamber of Commerce

John Andersen
Ford Meter Box Co., Inc.
Robert Pearson
Wabash County REMC
Celia Briggs
Wabash City Schools
Scott Rands
Indiana American Water Co
Mark Sapusek
Visionary Web
Lynne Schafer
Lynne's Lien Searching
Skip Daughtry
Beauchamp & McSpadden
Chris Goff
Judge, Superior Court
Phil Brown
Alumitech
Diane Morris
Borders & Beyond
Brian Howenstine
Wabash True Value
Larry Hoover
Quality Electric

Upcoming Events



May 8	12:00 - 1:00 p.m.	Lunch & Learn Seminar Chamber Conference Room
May 20	4:00 - 7:00 p.m.	Business After Hours Bickford Cottage
June 4	8:00 a.m. & 1:00 p.m.	WACCY Golf Honeywell Public Golf Course
June 11	7:00 - 8:30 a.m.	Business Before Hours Honeywell Center

Gold Members

We thank and salute those member businesses who carry GOLD LEVEL status:

**Beacon Credit Union
Pettit Printing, Inc.
Crossroads Bank
Richard Ford
Bulldog Battery
Wells Fargo Bank
Miller's Merry Manor
First Merchants Bank
Ford Meter Box Co., Inc.
First Farmers Bank & Trust
Kirtlan Automotive Machine & Repair, Inc.
Physician's Health Plan of Northern Indiana, Inc.
K & R Office Supply, Inc.
Indiana American Water Company
Mutual Federal Savings Bank
Duke Energy
Cornerstone Furniture**

Any Wabash County Chamber Member can elevate their membership status to Gold Level by investing an additional \$500 above their regular membership investment. In addition to having their company acknowledged at Chamber events and in publications, Gold Level Members receive \$100 in Chamber Bucks and receive a free large rotating banner ad on the Chamber website.

Please notify us of any changes on address label



P.O. Box 371
Wabash, IN 46992



WABASH COUNTY TOBACCO FREE COALITION

111 S. Wabash St.
Wabash IN 46992
260-563-7727

tobaccofreewabash@hotmail.com

MAKING THE BUSINESS COMMUNITY MORE AWARE

Daniel Gray
Wabash County
Coordinator
563 - 7727
tobaccofreewabash.com

*A Wabash County Youth
Service Bureau Program,
United Fund Agency*

May, 2008

Benefits of Being Smoke-Free

The debate is over. The science is clear.
Secondhand smoke is not a mere annoyance
but a serious health hazard.

— U.S. Surgeon General Richard Cerhana (June 27, 2006)

Why be smoke-free? Because you care. You care about your employees. You care about your customers. You care about the financial well-being of your business. Providing a smoke-free workplace makes sense. Tobacco use and secondhand smoke can have a devastating effect on your employees, your customers, and your business.

Why Your Business Should Be Smoke-Free

1. Lower your costs.

- The CDC puts a \$3,383 price tag on each smoker: \$1,760 in lost productivity and \$1,623 in excess medical expenditures.⁹
- Businesses pay an average of \$2,189 in workers' compensation costs for smokers, compared with \$176 for non-smokers.¹⁰
- The Environmental Protection Agency (EPA) estimates that smoke-free restaurants can expect to save about \$190 per 1,000 square feet each year in reduced cleaning and maintenance costs.¹¹
- The National Fire Protection Association found that in 1998 smoking materials caused 8,700 fires in nonresidential structures, resulting in direct property damages of \$60.5 million.¹²
- Fire insurance is commonly reduced 25-30 percent in smoke-free businesses.¹³
- The American Cancer Society reports that employees who smoke have an average insurance payment for health care of \$1,145, while nonsmoking employees average \$762.¹⁴

Too many Hoosiers are losing years because they do not embrace healthy habits. And, health care costs in Indiana are among the highest in the country. Our rising cost of health insurance coverage, combined with lost productivity due to illness, has made Indiana a less desirable place to do business.

*—Indiana Governor
Mitch Daniels,
INShape Indiana news
release, July 13, 2005*

9. Centers for Disease Control and Prevention. Annual Smoking-Attributable Mortality, Years of Potential Life Lost, and Economic Costs—United States, 1995-1999, US Public Health Service, Centers for Disease Control and Prevention, Morbidity and Mortality Weekly, April 12, 2002/51(14):300-3.

10. Musick, S, Napier D, Edington DW "The association of health risks with workers' compensation costs", Journal of Occupational and Environmental Medicine. 43(6):534-41, June 2001.

11. "The Dollars and (sense) benefits of having a smoke-free workplace," Michigan Department of Community Health, 2003.

12. Hafl, Jr, JP, "The U.S. Smoking-Related Fire Problem," National Fire Protection Association Fire Analysis and Research Division, April 2001.

13. Centers for Disease Control and Prevention. *Saves Lives, Saves Money: Make Your Business Smoke-Free*. Atlanta, Georgia: US Department of Health and Human Services, Centers for Disease Control and Prevention, National Center for Chronic Disease Prevention and Promotion, Office on Smoking and Health, June 2006.

14. The Cost of Smoking to Business. Article dated April 13, 2000 by American Cancer Society, <http://www.cancer.org>.

A FEW OF THE MANY COMPANIES THAT HAVE GONE SMOKE-FREE:

- The Coca-Cola Company
- Eli Lilly and Company*
- FedEx Corporation
- The Home Depot, Inc.
- IBM
- Lowe's Companies, Inc.*
- Marriott Hotels
- Prudential Financial
- The Sharper Image
- Starbucks Coffee Company
- Subaru Auto Assembly Plant
- Target Corporation
- Verizon
- Westin Hotels

*Indicates smoke-free campus

U.S. SMOKING RATES BY OCCUPATION

Adults in some occupations average a much higher smoking rate than the U.S. average of 20.9%.

- Machine
- Operators: 45.9%
 - Construction Trades: 41.3%
 - Material Moving Equipment Operators: 40.5%
 - Food Service: 39.8%
 - Health Service: 32.8%
 - Mechanics and Repairers: 31.5%
 - Factory Workers: 28.1%
 - Managers/Administrators: 25.2%
 - Secretaries: 20.5%



Secondhand Smoke is Toxic

Some of the Toxins Found in Secondhand Smoke Include:

Chemicals

- ☞ Formaldehyde
- ☞ Benzene
- ☞ Polonium-210
- ☞ Vinyl Chloride

Toxic Metals

- ☞ Chromium
- ☞ Arsenic
- ☞ Lead
- ☞ Cadmium

Poison Gases

- ☞ Carbon Monoxide
- ☞ Hydrogen Cyanide
- ☞ Butane
- ☞ Ammonia
- ☞ Toluene

When you and your employees are around someone who is smoking, you breathe in these chemicals.

INDIANA TOBACCO QUITLINE

1-800-QUIT-NOW

WE'LL SHOW YOU HOW

The Wabash County Tobacco Free Coalition is ready to help make your business become smoke free. Cessation helps are also available to any of your employees.

Just call!



“I’m Spread So Thin You Can See Through Me!”

Time Management and Personal Organization

with **Dave Weber** <http://www.daveweber.com>

Tuesday, October 14, 2008

8:00 AM - 12:00 PM

Honeywell Center

Wabash, Indiana



Who Should Attend?

Leaders in education, business & industry, or community

Cost: \$160 per participant

(Each participant will receive \$120 worth of materials.)

Sponsored cooperatively by the Wabash County Chamber of Commerce, Manchester Community Schools, Metropolitan School District of Wabash County and Wabash City Schools. Questions? Contact Lavonne Sparling, sparlingl@msdwc.k12.in.us, 260.569.6884 or Wabash Chamber, info@wabashchamber.org, 260.563.1168

Name: _____

Company: _____

Address: _____

Phone: _____ Email: _____

Payment: Check enclosed Invoice me M/C VISA Discover AmEx

Credit Card Account Number _____

Expiration Date _____ Signature _____

Please make checks payable to Wabash County Chamber of Commerce and mail to PO Box 371, Wabash, IN 46992 or fax to 260-563-1168. You may also register online at www.wabashchamber.org

Registration

(Please Register by Wednesday, May 14)

Name (Captain) _____

Company _____

Address _____

Phone _____

E-Mail _____

Name(s) of other players on team

- Please assign me/us to a team.
- I am willing to donate a door prize.

Amount enclosed: _____
(calculated from other side)

Please charge to: (Circle one)
Visa M/Card Discover Am/Exp

Acct #: _____

Expiration Date: _____

Signature: _____



WACC-Y Golf

Shot Gun Start

Best Ball Scramble

Morning Flight

Sign-in at 7:00 a.m.
Tee off at 8:00 a.m.

Afternoon Flight

Sign-in at 12:00 p.m.
Tee off at 1:00 p.m.

Lunch Provided

Games & Prizes

For Both Flights

- Skins Game
- Longest Drive
- Longest Putt
- Closest to the Pin
- Closest Second Shot
- Closest to the Line
- Hole in One Contest

Prizes for 1st, 2nd, 3rd & Last Place

Traveling Trophy to Overall Winner
All ties determined by score card
playoff beginning with 18th hole

Rain Date will be June 18



Twelfth Annual WACC-Y Golf Outing

sponsored by

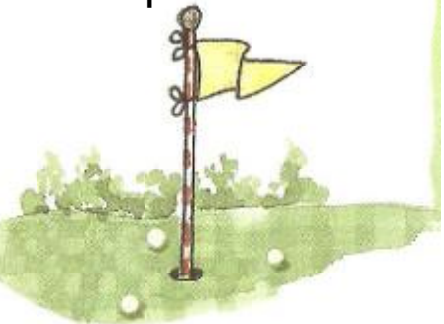
**Wabash County
Chamber of Commerce**

New!



**June 4, 2008
Honeywell Public
Golf Course**

Tee Times
8:00 a.m.
1:00 p.m.



Sponsorship Opportunities

ALL SPONSORSHIPS AWARDED ON A FIRST COME FIRST SERVED BASIS.

Golf Cart Sponsor — \$1,000

- ◆ Name on all Golf Carts
- ◆ **INCLUDES ONE GOLF TEAM**
- ◆ Listing in all Pre & Post Event Publicity includes: Radio (5 county), Newspapers, Chamber Pages, Newsletter, and Event Program

Driving Range Sponsor — \$500



- ◆ Your Logo Banner displayed at Driving Range
- ◆ Listing in all Pre & Post Event Publicity includes: Radio (5 county), Newspapers, Chamber Pages, Newsletter, and Event Program

Drink Station Sponsor — \$500



- ◆ Name at Drink Station
- ◆ May staff Drink Station and distribute information
- ◆ Listing in all Pre & Post Event Publicity includes: Radio (5 county), Newspapers, Chamber Pages, Newsletter, and Event Program

Lunch Sponsor — \$250

- ◆ Name on sign displayed at lunch pavillion
- ◆ Listing in all Pre & Post Event Publicity includes: Radio (5 county), Newspapers, Chamber Pages, Newsletter, and Event Program

Scoreboard Sponsor — \$250

- ◆ Sign with name at Scoreboard
- ◆ Listing in all Pre & Post Event Publicity includes: Radio (5 county), Newspapers, Chamber Pages, Newsletter, and Event Program

Hole Sponsor — \$125

- ◆ Sign with name at one Hole
- ◆ Listing in Event Program and Post Event Publicity

Door Prize Donor

- ◆ Give a prize of your choosing
- ◆ Name posted on item at event
- ◆ Listing in Event Program and Post Event Publicity

To reserve your tee time return the attached form with your payment to Wabash County Chamber of Commerce, PO Box 371, Wabash, IN 46992; email info@wabashchamber.org; or register online at wabashchamber.org

Fees

Include:
 18 holes of Golf
 Golf Cart
 Lunch
 One door prize entry
 Games & Contests
 Loads of Fun!

of players _____ x \$80 = _____
 (it takes 4 players to make a full team)

Tee Time preference
 8:00 a.m. _____
 1:00 p.m. _____

Golf Cart Sponsor @ \$1,000 _____
 (Includes team)
 Driving Range Sponsor @ \$500 _____
 Drink Cart Sponsor @ \$500 _____
 Lunch Sponsor @ \$250 _____
 Scoreboard Sponsor @ \$250 _____
 Hole Sponsor @ \$125 _____

Mulligans - \$5 ea. x _____ = _____
 (max. 3/person)
 Skins - \$20 per team _____

Total (place on other side) _____





Wabash County Chamber of Commerce
presents



Business After Hours



**You Are Invited
To An Open House**

Refreshments

At

Bickford Cottage

Free

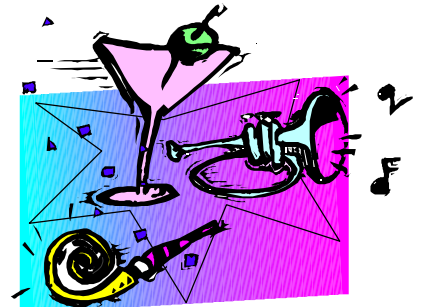
**3037 West Division Road
Wabash**

Door Prizes

Networking

May 20, 2008

4:00 - 7:00 p.m.



This is **YOUR** opportunity to visit a Chamber member business and learn exactly what that business does. To make your reservation contact the Chamber at 260.563.1168,

Fax: 260.563.6920 or email beth@wabashchamber.org

Reservations Requested