



# MEMBER CONNECTION

March 2008

P.O. Box 371  
Wabash, Indiana 46992  
Voice: 260-563-1168  
Fax: 260-563-6920

Kimberly Pinkerton, Editor  
Beth Miller, Layout & Design  
Email: [info@wabashchamber.org](mailto:info@wabashchamber.org)  
URL: [www.wabashchamber.org](http://www.wabashchamber.org)



PRESENT

## 2008 Wabash County Ag Day Breakfast TUESDAY, MARCH 18 – 7 A.M. WABASH COUNTY REMC

350 Wedcor Drive  
Wabash, Indiana



Ag Day Co-Chairs Howard Halderman (Halderman Farm Management) and Darin Hadley (Wells Fargo Bank) invite you to join us in this celebration of agriculture at Wabash County REMC on Tuesday, March 18, 7 a.m. Farmers, Agri-businesses, Chamber Members and others will enjoy a breakfast buffet catered by Market Street Grill (made possible through the generosity of First Merchants Bank) followed by a welcome by Bill Konyha, President/CEO Economic Development Group of Wabash Co. Attendees will hear Purdue Agriculture Economist Dr. Chris Hurt discuss Commodity Price Outlook, the Impact of the 2008 Farm Bill, and the Effect of the Expanding Bio-Fuels Market in Indiana. Halderman Farm Management will then give a presentation on Land Values and Lease Options. After a brief break to visit sponsor displays and refresh coffee, participants will hear presentations by Louis Dreyfus Soybean Bio/Diesel Plant and Wabash Agri-Products Ethanol Plant. This will include a panel discussion moderated by Darin Hadley with Q & A's by the audience. The program will wrap up by 11:00 a.m.

The event is open to the public and invitations have been mailed to the area farm/agri-business community as well as Chamber members. While this event is FREE, registration is limited to the first 125 participants. RSVP to the Wabash County Chamber: Voice-260.563.1168; email: [info@wabashchamber.org](mailto:info@wabashchamber.org) by March 14.



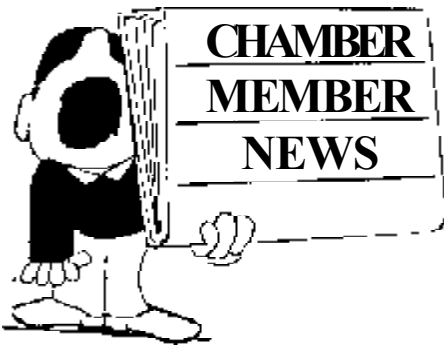
**First Merchants Bank**  
*your partners in success*

### PREMIER SPONSORS

- NORTH CENTRAL CO-OP
- BEACON CREDIT UNION
- MCKILLIP SEEDS
- FARM CREDIT SERVICES
- GRAIN SYSTEMS, INC.
- BECK'S HYBRIDS

### SUPPORTING SPONSORS

- AGRO-CHEM
- EDG OF WABASH COUNTY
- WELLS FARGO
- HALDERMAN FARM MANAGEMENT
- FIRST FINANCIAL BANK
- CROP FERTILITY SPECIALISTS
- FIRST FARMERS BANK & TRUST
- FRIERMOOD TIRE & ALIGNMENT
- CROSSROADS BANK



**Please route this newsletter to the other staff in your business to keep them up-to-date on services, functions and programs available to all employees of our member companies!**

**HAVE YOU HAD CHANGES OR IMPROVEMENTS IN YOUR BUSINESS? HAVE YOU RECEIVED AN AWARD, REACHED A MILESTONE, OR COMPLETED ADDITIONAL TRAINING? WE WANT TO KNOW. SHARE THESE THINGS WITH YOUR CHAMBER PARTNERS. THEY TOO ENJOY HEARING. CALL, FAX, E-MAIL, OR MAIL NOTES TO THE CHAMBER OFFICE.**

**Youth Service Bureau** is holding its annual Bowling for Kids on March 9 at Wabash Cannonball Lanes. All money raised stays in the county to benefit Wabash County youth. Volunteer to be on a team or to be a corporate sponsor today! Call 260.563.7727.

Congratulations to **Mitzi Pilgrim and Jeremy Steele of First Merchants Bank**. Ms. Pilgrim was recently named Vice President of Branch Administration, and Mr. Steele was promoted to Commercial Lender. First Merchants Bank has offices in Wabash, North Manchester, Peru and several other Indiana communities.

The **Wabash County Historical Museum** welcomes Steve Van Voorhis at the next History Hunter’s Brown Bag luncheon on March 27th. Steve will speak about his “African Safari Experience”. The presentation lasts from noon until 1pm. Bring your lunch and enjoy the presentation. Seating is limited for the event, so please call 260.563.9070 to reserve your spot. Participation is free for Museum members or with a paid daily admission.

Congratulations to all **Thermafiber** employees on their outstanding safety record of working 2 years without a lost time accident! To be able to accomplish this while they set a number of production records is quite a feat in the manufacturing sector. Again, we applaud Steve Edris, President/CEO for creating an environment which builds this type of team culture.

ABA Magazine recently listed community banks with the “largest farm loan portfolios.” Your Chamber President noticed that member **First Farmers Bank & Trust** was ranked #4 in the country! Way to go, FFBT!

**Honeywell Center** upcoming events:

- March
- 11 Ft. Wayne Philharmonic Piano Trio — Dinner 6 p.m., with performance following in the Honeywell room
- 20 7:30 p.m. Blast
- 29 7:30 p.m. Time for Three

Tickets may be purchased online at [www.honeywellcenter.org](http://www.honeywellcenter.org) or by calling 260.563.1102.

Windows of Opportunity (WOW), a program of the **Wabash Friends Counseling Center**, is offering workshops geared to help women reenter the workplace or prepare for a job change. WOW coordinator Linda Guthrie will begin the series on **March 12th at 6:00 p.m.** in the conference room of the Wabash Friends Counseling Center. This first meeting will be an introduction to all the services that WOW provides. The next set of sessions continues with three career workshops led by Martha J. Smith, Associate Dean of Students and Director of Career Development & Counseling at Huntington University. On May 7, 2007, 6:00 p.m., Ivy Tech Community College, Indiana Wesleyan University and Huntington College will discuss their different adult degree programs. April 9, 2008, 6:00 p.m., Mike Dezember, Director of Human Resources, Whites Residential and Family Services, will present a workshop on Interviewing: A View from the Other Side: Tips and Traps to Avoid. There is a \$6 registration fee per workshop or \$30 for the complete series. For more information, contact the Wabash Friends Counseling Center at 260.563.8452 or Linda Guthrie at [mlindaguthrie@comcast.net](mailto:mlindaguthrie@comcast.net). Visit our website for more information, [www.wabashfriendscounseling.com](http://www.wabashfriendscounseling.com) and click on “Women and Careers”.

Kids Kampus Early Childhood Center is proud to announce that Carrie Lester, Two Year Old Lead Teacher, has been awarded a Child Development Associate (CDA) Credential in recognition of her outstanding work with young children. The credential was awarded by the Council for Professional Recognition in Washington, D.C., which represents the early childhood education profession. For additional information about Kids Kampus phone (260) 356.0123. Kids Kampus is accredited by the National Academy of Early Childhood Programs and is the only licensed child care center in Huntington County and is a division of **Pathfinder Services, Inc.**, a not-for-profit human services organization based in Huntington. Check out their web site: [www.kidskampus.org](http://www.kidskampus.org)



**Duke Energy** is hosting an “Arc Flash Education Workshop” on Tuesday, March 18, at the Casa Bella located at Pastariffic, Kokomo, IN. An Arc flash sends concentrated radiant energy exploding outward and can happen in any electrical device, regardless of voltage. The aftereffects can be devastating to your employees/company. For more information on this workshop, click on the link below: <https://www.signup4.net/public/ap.aspx?EID=ARCF26E&OID=50>.

## HONOR STUDENT LUNCHEON DATE ANNOUNCED

Honor Student Luncheon Chair Trisha Metzger announces that the Wabash County and North Manchester Chambers of Commerce will be co-sponsoring the 9th Annual Honor Student Luncheon on Thursday, April 17, in the Honeywell Center Rink. The purpose of the event is to provide a setting where the top-graduating seniors of Wabash County can interact with businesses from the area and with each other as well as encourage "brain gain" for Wabash County. Business sponsors and speakers will encourage the students to return to Wabash County to use their talents following their post-secondary education. Manchester College is once again joining the celebration as the Education Sponsor. The keynote speakers for the event are Joel and Beth Stein. Stuart Jones, Dean of Enrollment and Executive Director of the Success Center, Manchester College, will emcee the luncheon. Businesses are encouraged to participate in this event by attending the luncheon and by sponsoring students' lunches. The cost is \$25 per person. Invitations were mailed to businesses late February and reservations are due by March 28. Please call the Chamber office at (260) 563-1168 or e-mail [beth@wabashchamber.org](mailto:beth@wabashchamber.org), if you have any questions.

## CHAMBER TO WELCOME LEGISLATORS

Government Affairs Committee Chair Chris Goff of the Wabash County Chamber of Commerce announces that plans have been finalized for a THIRD HOUSE SESSION to be held on Friday, March 8, 2008, at 8:00 AM, in the Chamber Community Room located at 210 S. Wabash (Chamber Community Room City Hall), in Wabash. Wabash County Chamber of Commerce Governor Gary "Doc" Dillon, Senator Dan Burton, Representative Fred Whitcomb, and Representative Fred Whitcomb are invited to participate; as well as other legislators including Dan Burton and Jonathan Winters. Community Relations for Congress, a former House member Bob Ford will also be present.

Property tax will be a primary focus of this legislative session. Other important legislative issues include economic and community growth, education, and health care. Come and bring your concerns for the status of those property tax issues. Judge Goff reports that legislators will be available for questions and comments. A continental breakfast will be served. Advance registrations are requested to ensure adequate seating. Reservations may be made by calling 260.563.1168 or e-mailing [info@wabashchamber.org](mailto:info@wabashchamber.org). This legislative forum provides an excellent opportunity for Wabash County citizens to interact with their political representatives in a one-on-one setting.

**CANCELLED DUE TO  
SEN. FORD'S FUNERAL**

**Looking for office space in downtown Wabash? Approximately 2800 Sq. Ft. available at 146 W. Market St. and has its own paved, 18-space parking lot. Call Lynne Schafer for more information at 260.569.9001 or 260.782.2562.**

## LT. GOVERNOR SKILLMAN ANNOUNCES "RURAL MATTERS" PHOTO CONTEST

Lt. Governor Becky Skillman and the Office of Community and Rural Affairs recently announced that entries are now being accepted for the "Rural Matters" photo contest, which will highlight the beauty of rural Indiana. Winners will receive recognition from the Lieutenant Governor and have their photographs publicly displayed in the Indiana Statehouse.

"Rural Indiana is full of beautiful scenery, architecture, and nature. This contest will allow us to celebrate the beauty of our rural areas and share it with our fellow Hoosiers," said Lt. Governor Skillman.

Entries are being accepted through March 28, 2008 in seven categories including architecture, business, cities and towns, education, landscape, nature, and recreation. A winner will be chosen for each category, as well as one overall winner. Professional and amateur photographers may submit up to five entries. Official contest rules and an entry form can be found at [www.ocra.in.gov](http://www.ocra.in.gov).

## WELCOME NEW MEMBERS

**The Original Limu**, 4870 S 700 E, Wabash, IN 46992 Phone: 765-981-4582, Email: [ednabassett@yahoo.com](mailto:ednabassett@yahoo.com) URL: [www.discoverlimu.com/Bassett](http://www.discoverlimu.com/Bassett) Contact: Terry and Edna Bassett.

**Grain Systems, Inc.**, 6552 S St. Rd. 13, Wabash, IN 46992 Phone: 260-563-5035 Email: [ken@gsihome.biz](mailto:ken@gsihome.biz) Contact: Ken Miller. They offer sales, erection, installation and service for grain storage handling and drying equipment.

**Gold Canyon Candles**, 7976 W 700 S - 35, LaFontaine, IN 46960, Phone: 260-468-2104 Email: [tay@onlyinternet.net](mailto:tay@onlyinternet.net) Contact: Tay Leonhardt. They sell "The World's Finest Candles."

**Canal House Antiques**, 36 E. Canal St., Wabash, IN 46992 Phone: 260-786-3178 Email: [canalhouseantiques@earthlink.net](mailto:canalhouseantiques@earthlink.net) Contact: Tom Trisler. Primitive antiques, classware, tools, books. A little bit of everything.

**Peebles Realty**, 532 N. Cass St., Wabash, IN 46992 Phone: 260-563-7478 FAX: 260-563-2144 Email: [jen\\_a\\_t@hotmail.com](mailto:jen_a_t@hotmail.com) URL: [www.peeblesrealtyinc.com](http://www.peeblesrealtyinc.com) Contact: Jennie Terrell. We deal with first time home buyers and investors in commercial, residential or farm real estate. We offer a free market analysis.

**HR Ideas Unlimited**, 3200 S 300 E, Wabash, IN 46992, Phone: 260-563-5306 URL: [www.hrideasunlimited.net](http://www.hrideasunlimited.net) Contact: Alan Sieper. Training and development coaching, and training people how to turn ideas into action.

**Joy Christian Bookstore**, 1317 N. Cass St., Wabash, IN 46992 Phone: 260-563-8511 Email: [joybooks@verizon.net](mailto:joybooks@verizon.net) Contact: Kevin VanDuyn. Full line Christian Bookstore. Coffee bar, gifts, collectibles, Precious Moments, Mostly Memories items, religious tees, extensive Bible area, picture gallery, cards, Christian music, videos, church supplies, teaching curriculums, children's area, kids gifts and trinkets, and a distributor for church furnishings.

**Breakaway Bike and Fitness Shop, Inc.**, 154 N. Grant St, Peru, IN 46970 Phone: 765-473-3848 FAX: 765-473-5264 Email: [breakaway\\_bike\\_shop@yahoo.com](mailto:breakaway_bike_shop@yahoo.com) Contact: Zac & Shannon See. Specializing in bicycles, BMX, sakteboards, and fitness equipment sales. Repair and service for all types of bicycles and fitness equipment.

**Make It Your Own**, 24 W. Canal St, 2nd floor, Wabash, IN 46992 Phone: 260-569-1551 FAX: 260-563-0198 Email: [makeityourown@comcast.net](mailto:makeityourown@comcast.net) Contact: Karen J. Eilts-Walter. Come in and Paint Your Own Pottery or take classes on the Pottery Wheel. We offer Kid's Art Camp and various workshops.

**Cornerstone Furniture**, 233 S. Miami St., Wabash, IN 46992 Phone: 260-563-5343 FAX: 260-563-4565 Email: [cornerstonefurniture@gmail.com](mailto:cornerstonefurniture@gmail.com) Contact: Jason Smith. Complete line of home furnishings.

**Liberty Swine Farms**, 1677 E 500 S, Wabash, IN 46992 Phone: 260-569-7763 Email: [rcurless@libertyswine.com](mailto:rcurless@libertyswine.com) URL: [www.libertyswinefarms.com](http://www.libertyswinefarms.com) Contact: Randy Curless. Liberty Swine Farms is a 1000 sow, farrow to finish swine raising maternal line female breeding stock for Whiteshire/Hamroc Company, Albion, IN.

**BJS Landscaping**, 184 Sheridan St, Wabash, IN 46992 Phone: 260-571-3817 Contact: Bill Simpson.

**WELCOME NEW GOLD MEMBER — CORNERSTONE FURNITURE**

# CAPTURED MOMENTS FROM THE 2008 HOME & BUSINESS EXPO

## "Join Us In The Winner's Circle"

Corporate sponsor

**POET**<sup>TM</sup>  
Energy inspired.<sup>TM</sup>

### THANKS TO OUR SPONSORS AND VENDORS

Quality Electric  
Wells Fargo Bank  
Wabash Electric  
Denny Motor Sales  
Beacon Credit Union  
Visionary Web  
Pro Exteriors  
Lundquist Appraisals & Real Estate  
Wabash Country Club  
WJOT Oldies 106  
Miller's Merry Manor  
Mutual Federal Savings Bank  
Huntington University Excel Program  
The Learn More Center  
Total Works Salon  
Border Patrol Curbscaping, LLC  
Rabb/Kinetico Water Systems  
Wabash Area Community Theater  
Wabash Engraving  
Heeters Performance Center, Inc.  
POET Energy  
Wabash County Hospital  
White's Residential & Family Services, Inc.  
Yohe Realty, Inc.  
First Merchants Bank  
Pathfinder Services, Inc.  
Community Connections  
Curves  
Indiana Wesleyan University  
WPIUS Cellular  
First Farmers Bank & Trust  
Wabash County Historical Museum  
Dr. James Ford Historic Home  
Honeywell Center  
Bob's Media Blasting/Lyn's Fashions  
Wabash County Solid Waste Management  
Francis Shoppe/Terri Ahlfeld Mary Kay  
Heritage Pointe  
Wabash Marketplace  
Wabash County Tobacco Free Coalition  
H & R Block  
Midwest Home Design  
Reins and Rainbows, LLC  
Thorne Insurance  
Wabash Plain Dealer  
Hoosier Windows & Siding  
Grandstaff-Hentgen Funeral Service  
Heartland Adult Education Program  
Wabash County Council on Aging  
Vernon Manor Children's Home  
The Huber Agency/Breakaway Bike  
Gorman Center for Orthodontics  
Autumn Ridge Rehabilitation Center  
Avon Independent Representative  
SounDecisions  
GarbEdge Custom Clothing LLC  
Gold Canyon Candles  
Centennial Wireless  
95.9 KISS FM  
The Original Limu  
American Red Cross  
Community Foundation of Wabash County  
Conservation Officers  
Wabash County YMCA  
Education for Conflict Resolution



### Thanks to those who donated Door Prizes and Silent Auction items

Vernon Manor Children's Home  
H & R Block  
Yohe Realty  
Wabash County CVB  
Randall Miller & Associates  
Steve Weir - Edward Jones  
Gold Canyon Candle Company  
Pizza Hut  
Brett Wynn - originalpromotions.com  
Wells Fargo  
Borders & Beyond  
AIA - Wabash Engraving  
Young's Culligan  
First Merchants Bank  
Ponderosa  
City of Wabash  
Nowak's Hallmark  
SounDecision  
First Farmers Bank & Trust  
Dorais Chevrolet  
Colleen Coble  
Wabash Marketplace Inc.  
Wabash True Value/Just Ask Rental  
Brandt's Harley Davidson  
Reins and Rainbows  
Miller Furniture  
Bob's Media/Lyn's Fashions  
Wabash Electric  
Midnight Gypsy  
Jimmie Mae & Larry Hudson  
Kirtlan Automotive  
Servissoft-Eco Water



*Steve Johnson, Wabash County Solid Waste Management District, accepts the Allegiant Air tickets as Vendor Grand Prize winner.*

### Congratulations to our Door Prize winners:

Rita Penn  
Charles Shilling  
Clifford Strickler  
Bonnie Genovese  
Mary Waters  
Heather Miller  
Billie Ison  
Mike Patch  
Robert Gillespie  
Linda Beck  
Lisa Sledge  
Lindsay Jones  
Tay Leonhardt  
Dianne Fife



## FROM THE LIBRARY

by Ware W. Wimberly, Director

Instead of looking at materials the Wabash Carnegie Public Library has for your use, I wanted to take a different track this time. The Library is working on two initiatives to partner with and promote our community. One of the initiatives is a One Book/One Community project similar to the Community Read that North Manchester Public Library is doing for their 100 year celebration. The project here in Wabash would be centered on *The Circus in Winter* by Cathy Day who grew up in Peru. According to Amazon.com, this book, in 11 linked short stories, discusses the winter home of The Great Porter Circus in Lima, IN from 1884 to 1939, and “the secret lives and loves of circus people and their descendents”.

The Library has been in conversation with some other institutions in the community about partnering on this project. It would involve people in Wabash and the surrounding area reading *The Circus in Winter* together. Several activities such as a book discussion would be set up that would center on the book. Many communities have done this project or a community read and have found it to be an exciting time of sharing within the community. Details for the project are still in the planning stages, but we believe it would be a fun and worthwhile event for our community. Additional partners in this project are welcomed. If you or your organization would be interested, please contact me at (260) 563-2972.

Another initiative that Wabash Carnegie Public Library is considering is a Friends of the Library group. Most public libraries have such a group. Friends of the Library is an organization that partners with the Library in carrying out its mission to the community. It would be a volunteer organization that is a separate entity from the Library itself, but supports and works with the Library. We envision a Friends group consisting of people in the community who love the Library or libraries in general and would want to partner with us. Those interested should contact me. I can be reached at 563-2972 or e-mailed at [warew@wabash.lib.in.us](mailto:warew@wabash.lib.in.us)

Whether through the resources or possible partnerships we can provide, the Wabash Carnegie Public Library would be pleased to be of assistance to you.

## BUSINESS SKILL ENHANCEMENT OPPORTUNITIES

### ESSENTIALS OF BUSINESS PLANNING SERIES

Session One March 11, 2008

Intro to entrepreneurship lifestyle  
Different strategies in starting a business  
Why write a business plan?  
Business Structure & Organization

Session Two March 18, 2008

Understanding Demographics & Markets  
Making Projections & Assumptions

Session Three March 25, 2008

Developing a Cash Flow Statement  
Bankers & Funding  
Business Plan Writing  
Networking and Deal Making

Classes will be conducted from 9 a.m. – 12 p.m. at the Chamber offices. Registration is \$95 for all three sessions. Instructor is Monty Henderson, SBDC Advisor. Call or email the Chamber office: 260.563.1168 or [info@wabashchamber.org](mailto:info@wabashchamber.org).

### MARCH LUNCH & LEARN SESSION

March 13, 2008 from Noon to 1 p.m. in the Chamber Meeting Room. Topic “Eating Right for Your Heart” presented by Mary Schaeffer, Nutritional Director, Wabash County Hospital. Sponsored by Ford Meter Box, Inc. Cost is \$12/members — \$24/non-members. Register by March 11 by calling the Chamber or online at [www.wabashchamber.org](http://www.wabashchamber.org).

### CUSTOMER SERVICE WORKSHOP

March 27, 2008, from 10:30 a.m. – 1:30 p.m.. Presenter is Mary Ellen Griffin, Executive Director, St. Joseph Hospital, Kokomo. Mary Ellen will bring her extensive knowledge of customer relations and keys to exceeding your customers’ expectations to this top-notch customer service seminar. Cost is \$59 and includes lunch and all materials. Register through the Chamber office.

# INDIANA'S 2008 GOVERNMENT CONTRACT PROCUREMENT CONFERENCE

As many as thirty government agencies, Department of Defense agencies, prime contractors, state agencies and Indiana gaming casinos will be at the Partners in Contracting Corporation 11th Biennial Government Contract Procurement Conference. The event, which will be held on Thursday, May 22, 2008, at the Radisson Hotel, Merrillville, IN, is being sponsored by Partners in Contracting Corporation; Gary-East Chicago-Hammond Empowerment Zone, Cender and Company, Peoples Bank, SEH Engineering, Indiana Small Business Development Centers and the Northwest Indiana Chambers of Commerce Executive Directors Association. Committed agencies and prime contractors, include General Motors, TACOM, Defense Supply Center Columbus, IDEM, Rolls Royce, Komatsu America International, Northern Indiana Commuter Transportation District, USDA Forest Service, General Services Administration, ITT, U.S. Small Business Administration, Veteran's Administration and the U.S. EPA. See [www.piccorp.org](http://www.piccorp.org) for a complete list.

In addition to the exhibitor booths, the one day conference features workshops throughout the day such as "Marketing your Business to the Government", "Overview of Certifications and Designations", "Doing

Business with the Defense Supply Center Columbus" and "Doing Business with the Veteran's Administration.

The conference will begin on Wednesday evening May 21, 2008 with a networking reception sponsored by Horseshoe Casino and the Northern Indiana Public Service Company.

The cost for attendees is \$ 90.00 per person which includes admission to the networking event, exhibits, workshops and meals. Service disabled veteran owned businesses will receive admission for one person per business at no charge. For more information or to register go to [www.piccorp.org](http://www.piccorp.org) or contact Partners in Contracting office at [picc@piccorp.org](mailto:picc@piccorp.org) or call 219. 916.5660.

## TWELVTH ANNUAL WACCY GOLF OUTING

COMING JUNE 4  
MORNING & AFTERNOON FLIGHTS  
MARK YOUR CALENDARS!

**Don't Forget!!! Daylight Savings Time  
Spring Forward March 9**

### BUSINESS BEFORE HOURS

The next Business Before Hours will be April 9, 7:00 a.m., at the Honeywell Center, 275 W. Market St., Wabash.



Business Sponsors are **EDG of Wabash County, Vernon Manor Childrens Home, Insurance One Services, Crossroads Bank, and Investment Center at Crossroads Bank.** The emcee will be **Kathy Jones, First Farmers Bank & Trust.** To make reservations call the Chamber at 260.563.1168, email [beth@wabashchamber.org](mailto:beth@wabashchamber.org) or visit our web site at [www.wabashchamber.org](http://www.wabashchamber.org).

### BUSINESS AFTER HOURS

The next Business After Hours is scheduled for March 26. The sponsor will be **ARC of Wabash County.** Please plan to visit their 595 South Miami Street location between 4:00 and 6:00 p.m. Don't miss this opportunity to tour a unique facility and network with their staff and other business people.



Business After Hours has been a very popular event. Those businesses who have sponsored a BAH have been very pleased with the number of visitors to their facilities. If you would like to sponsor a BAH, please call the Chamber office, 260.563.1168. We are now booking for 2009.

## BOARD MEMBERS

2007-2008

Andy Eads, Chair  
Wabash Plain Dealer  
Trisha Metzger, Chair Elect  
First Federal Savings Bank  
Kathy Jones, Vice Chair  
First Farmers Bank & Trust  
Doug Mays, Treasurer  
Thermafiber  
Brian Campbell  
Randall Miller & Associates  
Ron Kerby, Past Chair  
First Merchants Bank  
Kimberly Pinkerton, President  
Chamber of Commerce

John Andersen  
Ford Meter Box Co., Inc.  
Robert Pearson  
Wabash County REMC  
Celia Briggs  
Wabash City Schools  
Scott Rands  
Indiana American Water Co  
Mark Sapusek  
Visionary Web  
Lynne Schafer  
Lynne's Lien Searching  
Skip Daughtry  
Beauchamp & McSpadden  
Chris Goff  
Judge, Superior Court  
Phil Brown  
Alumitech  
Diane Morris  
Borders & Beyond  
Brian Howenstine  
Wabash True Value  
Larry Hoover  
Quality Electric

## Upcoming Events

Mar. 8	8:00 a.m.	Third House Session Chamber Meeting Room
Mar. 13	11:00 a.m. - 12:00 p.m.	Lunch & Learn Seminar Chamber Meeting Room
Mar. 18	7:00 - 11:00 a.m.	Ag Day Event REMC Conference Room
Mar. 26	4:00 - 6:00 p.m.	Business After Hours ARC of Wabash County
Apr. 9	7:00 - 8:30 a.m.	Business Before Hours Honeywell Center

# Gold Members

We thank and salute those member businesses who carry GOLD LEVEL status:

**Beacon Credit Union**  
**Pettit Printing, Inc.**  
**Crossroads Bank**  
**Richard Ford**  
**Bulldog Battery**  
**Wells Fargo Bank**  
**Miller's Merry Manor**  
**First Merchants Bank**  
**Ford Meter Box Co., Inc.**  
**First Farmers Bank & Trust**  
**Kirtlan Automotive Machine & Repair, Inc.**  
**Physician's Health Plan of Northern Indiana, Inc.**  
**K & R Office Supply, Inc.**  
**Indiana American Water Company**  
**Mutual Federal Savings Bank**  
**Duke Energy**  
**Cornerstone Furniture (NEW)**

Any Wabash County Chamber Member can elevate their membership status to Gold Level by investing an additional \$500 above their regular membership investment. In addition to having their company acknowledged at Chamber events and in publications, Gold Level Members receive \$100 in Chamber Bucks and receive a free large rotating banner ad on the Chamber website.

Please notify us of any changes on address label



P.O. Box 371  
Wabash, IN 46992



Wabash County Chamber of Commerce  
presents



# Business After Hours



**You Are Invited  
To An Open House**

*Refreshments*

**At**

**ARC of Wabash County**

**A United Fund Agency**

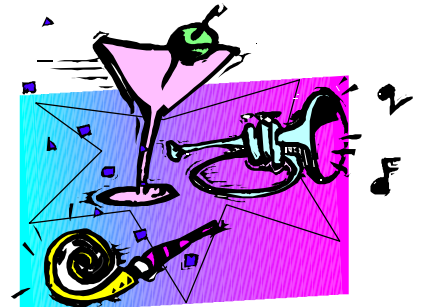
**595 South Miami Street  
Wabash**

*Free*

*Door Prizes*

*Networking*

**March 26, 2008  
4:00 - 6:00 p.m.**



This is **YOUR** opportunity to visit a Chamber member business and learn exactly what that business does. To make your reservation contact the Chamber at 260.563.1168,

Fax: 260.563.6920 or email [beth@wabashchamber.org](mailto:beth@wabashchamber.org)

**Reservations Requested**



Wabash County Chamber of Commerce  
introduces



# Front-Line Supervision & Leadership Training **BEYOND THE BASICS**

Presented by



HR Ideas **Unlimited**

**Wednesday, April 30, 2008**

**8:00 a.m. - 4:30 p.m.**

**Honeywell Center — 275 West Market Street  
Wabash, IN 46992**

REGISTER TODAY: [www.wabashchamber.org](http://www.wabashchamber.org) or call 260.563.1168

Join us for robust, exciting and challenging application-based workshops which examine real-life challenges, practical problem-solving approaches and lively discussions. If you are looking for a lecture or for general information, these workshops are not for you.

## Agenda

### MORNING SESSION

- 8:00 a.m. Opening General Session
- 8:30 - 10:00 a.m. Breakout Sessions (choose one)
- A. Conflict Resolution
  - B. Surviving an OSHA Inspection
  - C. Discipline & Performance
  - D. Interviewing & Background Checks

### BREAK

- 10:15 - 11:45 a.m. Breakout Sessions (choose one)
- A. Conflict Resolution
  - B. Surviving an OSHA Inspection
  - C. Discipline & Performance
  - D. Interviewing & Background Checks

**LUNCH (on your own)**

### AFTERNOON SESSION

- 1:00 - 2:30 p.m. Breakout Sessions (choose one)
- A. Conflict Resolution
  - B. Surviving an OSHA Inspection
  - C. Discipline & Performance
  - D. Interviewing & Background Checks

### BREAK

- 2:45 - 4:15 p.m. Breakout Sessions (choose one)
- A. Conflict Resolution
  - B. Surviving an OSHA Inspection
  - C. Discipline & Performance
  - D. Interviewing & Background Checks

4:20 - 4:30 p.m. Closing General Session

# Management Workshops for **Your Success**\*\*

## A. CONFLICT RESOLUTION

Practice proven, hands-on techniques to effectively assess, control and harness organizational and interpersonal conflict to motivate and change behaviors, with less stress and more confidence.



**Alan Sieper, HR Manager for Thermafiber, Inc.**, has 25 years of industrial labor relations, negotiations and arbitration experience in union shops and remaining union-free in management represented facilities. He serves as an adjunct instructor for adult education courses. Alan earned a degree in Speech Communications from Eastern Illinois University, a degree in Business Management and an MBA from Indiana Tech University and is certified as an SPHR.

## B. SURVIVING AN OSHA INSPECTION

Preparation and understanding are the keys to successfully manage an OSHA inspection. Learn how to comply with OSHA regulations and reduce risk in your workplace in a relatively simple and effective manner.



**William Doak, EH & S Coordinator for Western Reman**, has 12 years experience in industrial environmental, health, safety and security, and has earned a Psychology degree from the University of New Mexico. His experience also includes service in the U.S. Army and as a contractor and Journeyman. Bill has extensive experience in OSHA 1910 General Industry Standards, behavioral-based safety programs, auditing and incentive systems.

## C. DISCIPLINE & PERFORMANCE

### Responsibility — Accountability Consequences — Results

Using discipline to teach, coach and motivate your employees to achieve high performance or help them to discover a different path to success.



**Michael Dezember, HR Director for White's Residential & Family Services, Inc.**, has 16 years of Human Resource, supervision and managerial experience in industrial and service sectors. He earned a degree in Industrial Health & Safety Management from Indiana State University, an MBA from Indiana Wesleyan University and has a PHR certification. Mike has designed programs on how to evaluate, motivate and counsel employees to improve performance.

## D. INTERVIEWING & BACKGROUND CHECKS

Improve your ability to elicit the **right** information to make the **right** hiring decision. Use techniques proven to get candid, truthful and revealing information essential to your business and how to conduct effective background searches.



**Lori Eltzroth, Vice President of HR for Beacon Credit Union**, has 14 years of Human Resource Generalist experience in financial institutions. She earned a Psychology & Sociology degree from Indiana University and has a PHR certification. Lori is a pioneer in the area of Consumer Driven Healthcare and has extensive experience in the recruitment, hiring, and professional development of executive, professional and customer service employees.

**\*\*Note: All participants will receive a certificate of attendance and 6.5 hours of training applied toward PHR-SPHR re-certification.**

# Front-Line Supervision & Leadership Training *BEYOND THE BASICS*

## Workshop Fees

Full Day — Chamber Members — \$80 Non-members — \$100 Half Day Option — \$50

### REGISTRATION

Name \_\_\_\_\_

Company \_\_\_\_\_

Address \_\_\_\_\_

City \_\_\_\_\_ St. \_\_\_\_\_ ZIP \_\_\_\_\_

Phone \_\_\_\_\_ Fax \_\_\_\_\_

Email \_\_\_\_\_

Choose (circle one)      Full day      Half day

Choose break out options (circle one for each session)

Session 1      A      B      C      D

Session 2      A      B      C      D

Session 3      A      B      C      D

Session 4      A      B      C      D

Check enclosed for \_\_\_\_\_ Please invoice me \_\_\_\_\_

Credit Card \_\_\_ Visa      \_\_\_ AmEx      \_\_\_ Discover      \_\_\_ M/C

Account # \_\_\_\_\_ Exp. Date \_\_\_\_\_

Signature \_\_\_\_\_

Return to Wabash County Chamber of Commerce, PO Box 371, Wabash IN 46992 or register online at [www.wabashchamber.org](http://www.wabashchamber.org), email [info@wabashchamber.org](mailto:info@wabashchamber.org) or call 260.563.1168

**Limited Seating — Deadline April 25, 2008**